

# smartvuhome

## SmartVU Home Smart Power Board Quick Start Guide



[www.smartvuhome.co.nz](http://www.smartvuhome.co.nz)

Please read this Quick Start Guide carefully before using,  
and keep it for future reference.

## 1. Download the SmartVU Home App

If you haven't already, download and register an account on the free SmartVU Home app.



**It is available on both iOS and Android.**

Simply search "SmartVU Home" or you can scan the QR Code below.



Launch the SmartVU Home app from your phone or tablet and select the Register button.

Follow the on-screen instructions.

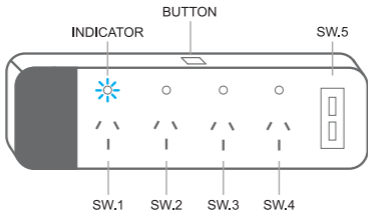
## 2. Connection Preparation

Insert your SmartVU Home Power Board into a suitable power source and switch ON.

The SmartVU Home app supports TWO pairing modes: Smart Mode and AP Mode.

### Smart Mode:

Once the Power Board is switched ON, to enter pairing mode, press and hold the RESET button for 5 seconds.



The indicator on the Power Board will start blinking rapidly, twice per second.

### AP Mode:

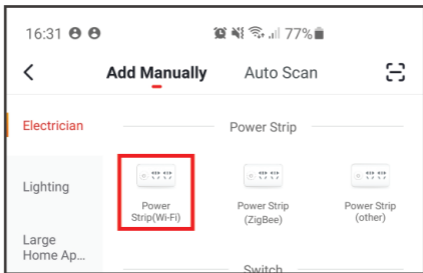
Once the indicator on the Power Board is blinking rapidly, press and hold the RESET button for another 5 seconds.

The indicator on the Power Board will start blinking slowly, once every three seconds.

### 3. Add Device

Once the SmartVU Home Power Board is in pairing mode, select **Add Device** or **+** in the SmartVU Home app.

Select **Electrical**, then **Power Strip (Wi-Fi)**.



Follow the app's on-screen instructions.

By default the SmartVU Home app will attempt pairing in Smart Mode.

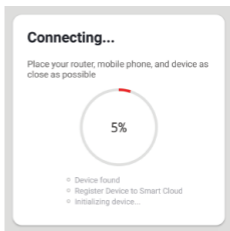
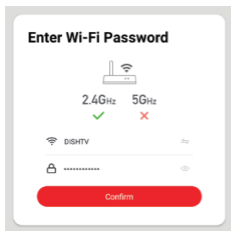
Confirm the Power Board's indicator is blinking rapidly, and select **Confirm Indicator's rapidly blinking** to proceed.

Otherwise, if the Power Board's indicator is blinking slowly, select **Other Mode** in the top-right, then **AP Mode**.

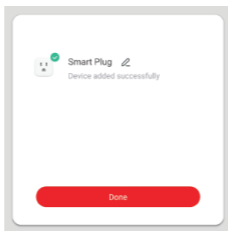
### 3. Add Device

Once you've confirmed the Power Board is blinking rapidly, you'll be prompted to enter the Wi-Fi Password.

**NOTE:** Make sure your phone or tablet is connected with your Wireless Router. Please note the Power Board will only connect to 2.4GHz Wi-Fi, not 5GHz Wi-Fi.



The SmartVU Home app will scan and connect to the Power Board, showing **Device Added Successfully**.



## 4. Control Device

Once the Power Board has been added successfully, you can open the control options.

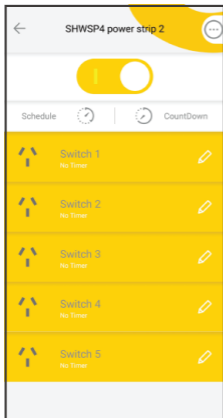


Fig-1

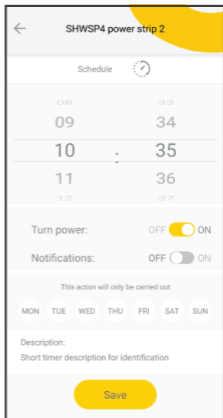


Fig-2

For example, Fig-1 shows the Power Board is ON, with each Outlet turned ON. Where options like Countdown, and Timer are available to be configured. Fig-2 shows the Timer option, schedule your connected appliances to turn ON/OFF as required.

**NOTE:** Select **Edit**  to rename each individual Outlet.

## 5. Troubleshooting

For more information, visit [www.smartvuhome.co.nz](http://www.smartvuhome.co.nz)

### **Unable to pair the Power Board with the App.**

**Option 1:** Ensure your phone or tablet is connected to a 2.4GHz Wi-Fi Network.

**Option 2:** Check that the Power Board is in the correct pairing mode. Eg. If the Power Board is blinking slowly, the Smart Mode pairing option won't connect.

**Option 3:** Check the Internet connection on your Wi-Fi Network.

**Option 4:** If pairing via Smart Mode, ensure the Wi-Fi Password entered is correct, and you're connecting to the same Wi-Fi Network as your phone or tablet.

**Option 5:** Try set up the Power Board closer to your Router.

## 6. Specification

- Model Number: SHWSP4
- Input: AC 240V ~ 50Hz
- Max Total Load: 10A, 2400W
- 1x USB Output Power: DC 5V/2.4A
- USB Max Total Load (for BOTH): DC 5V/4.2A
- Wireless: 2.4GHz (802.11 b/g/n)

FOR INDOOR USE ONLY.

# smartvuhome

## SmartVU Home Smart Power Board

Connect & Control. Anytime. Anywhere.

© 2020 Dish TV Technologies Ltd. SmartVU Home is a trademark of Dish TV Technologies Ltd.

Google and Google Play are trademarks of Google LLC.  
Apple® and the App Store® are trademarks of Apple Inc.