

STEP FOUR

TROUBLESHOOTING

Having trouble? Check out the information below before contacting Technical Support.

ISSUE	POSSIBLE CAUSES	WHAT TO CHECK
No Power Indicator on Front Panel.	<ul style="list-style-type: none"> Unplugged/ Switched Off. 	Check the Power Supply is plugged into both the SNT7070 and Wall Socket correctly, ensuring the Wall Socket is switched on and there is power available.
Power to SNT7070, but NO Sound or Picture on TV.	<ul style="list-style-type: none"> HDMI cable is not connected. 	Check the HDMI cable used is securely connected to both the SNT7070 and the TV.
	<ul style="list-style-type: none"> Incorrect input on the TV is selected. 	Check to see if the TV is set to the same HDMI input the SNT7070 is connected to.
	<ul style="list-style-type: none"> The TV may be unable to display the current output resolution. 	Menu - Settings - System Settings - HD Resolution Adjust the resolution to suit the TV, use of another TV or Monitor may be required to navigate Menus.
SATELLITE DISH Database Empty or Tuning Failed. Signal Interference or No Signal.	<ul style="list-style-type: none"> Satellite Dish cable not connected. 	Ensure the cable from the Satellite Dish is connected securely to the SATELLITE IN connection.
	<ul style="list-style-type: none"> LNB on the Satellite Dish is faulty or LNB skew is incorrect. 	We recommend consulting a Satellite Technician to check the LNB skew or replace the LNB as required.
	<ul style="list-style-type: none"> The Satellite Dish may be misaligned. 	Align the Satellite Dish with correct Satellite (Optus D1). Ensure there are no objects in the signal path.
ANTENNA/AERIAL Database Empty or Tuning Failed. Signal Interference or No Signal.	<ul style="list-style-type: none"> Aerial cable not connected. 	Ensure the cable from the UHF Aerial is connected securely to the ANTENNA IN connection.
	<ul style="list-style-type: none"> The area has limited or no Freeview Terrestrial coverage. 	We recommend consulting an Aerial Technician to check, or visit freeviewnz.tv/get-freeview/ for more information.
	<ul style="list-style-type: none"> The UHF Aerial may be misaligned. 	Align the UHF Aerial to the closest transmitter with the least amount of obstructions between it and your Aerial.
SNT7070 is not responding to Remote.	<ul style="list-style-type: none"> Batteries are incorrectly inserted into Remote. 	Ensure batteries correctly align with the polarity (+/-) markings found in the battery compartment.
	<ul style="list-style-type: none"> Infrared receiver on the SNT7070 is obstructed. 	Check for clear line of sight between the Front Panel and the Remote. Move any obstructions if necessary.
Picture distorted, cropped, letterboxed or expanded.	<ul style="list-style-type: none"> The SNT7070 or TV Aspect Ratio has been incorrectly set. 	Menu - Settings - System Settings - Aspect Ratio Adjust the Aspect Ratio (Auto, 4:3, 16:9) to suit the TV, or consult your TV Manual to adjust the TV's Aspect Ratio.
Issues with Recording or Playback with USB Device.	<ul style="list-style-type: none"> The USB Device has insufficient speed or performance. 	While USB Flash Drives may work to record, they are often inconsistent. Use of an Externally Powered Hard Drive is always recommended.

For further help and information on using the SNT7070, please refer to the **User Manual**.

STEP ONE

WHAT'S IN THE BOX?

Before setting up, please ensure that the Dish TV SNT7070 has the following components:



Dish TV SNT7070

Remote Control



User Manual



Quick Start Guide



HD Audio/Video Cable



2x AAA Batteries



12V Power Supply



Some items missing? please contact the retailer or store you purchased this from.

This Dish TV Satellite and Digital Terrestrial Receiver gives you access to TV and Radio Channels broadcast on Freeview Satellite or Freeview UHF.

For more information about Freeview, visit www.freeviewnz.tv

This product is capable of receiving and decoding Dolby Audio™.

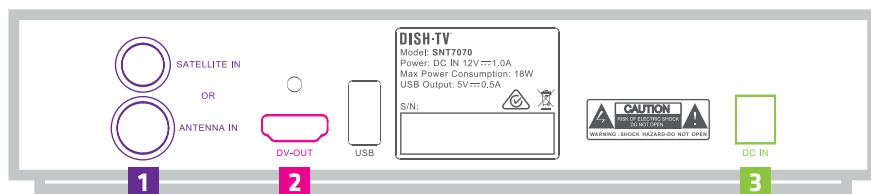
Manufactured under license from Dolby Laboratories. Dolby, Dolby Audio, and the double-D symbol are trademarks of Dolby Laboratories.

For further help and information on using the SNT7070, please refer to the **User Manual**.

STEP TWO

SETTING UP YOUR SNT7070

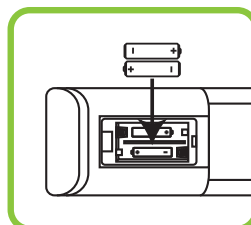
- 1 Connect the cable from a Satellite Dish to the SATELLITE IN connection.
OR
Connect the cable from a UHF Aerial to the ANTENNA IN connection
- 2 Next, connect your SNT7070 to your TV with the HDMI cable supplied.
- 3 Finally, plug the Power Supply in and switch on.



BATTERY INSTALLATION

The Remote requires 2x AAA Batteries to operate. Below are the steps to assist with installing the batteries correctly.

- 01: Remove the back cover of the battery compartment.
- 02: Insert the batteries, ensuring they correctly align with polarity (+/-) markings found in the battery compartment.
- 03: Close the back cover.



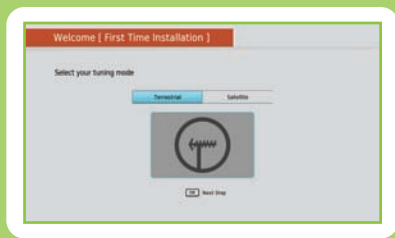
Images are for reference only.

GETTING STARTED

Switch your TV on and select the video input you have connected your SNT7070 to.

Switch your SNT7070 on and allow time for it to power up, should take approx. 30 seconds.

The 'Welcome' window will show on screen, read through and follow each step to finalize the set up of your SNT7070.



Welcome

For further help and information on using the SNT7070, please refer to the **User Manual**.

STEP THREE

LEARNING YOUR REMOTE

POWER

Power ON/Standby

GUIDE

View the TV Guide

COLOUR BUTTONS

Interactive Use

RECORD

Instantly Record¹

MENU

View Menu Options

ARROWS + OK

Navigate and Select

NUMBER BUTTONS

Change Channels

LIBRARY

View Recordings¹



¹Recording requires an Externally Powered USB Hard Drive (Not Supplied).

For further help and information on using the SNT7070, please refer to the **User Manual**.