

aerialBox
T1020

UHF Aerial
Dish TV®

freeview|HD®



User Manual



freeview|HD

GOING
DIGITAL
CONCEPT

Welcome

Thank you for choosing this DishTV Freeview High Definition Digital Set Top Box. You will be able to receive all Freeview|HD UHF High Definition and Standard Definition digital TV channels, as well as detailed Freeview program information with the Freeview 8 Day Electronic Program Guide. For more information about Freeview visit www.freeviewnz.tv

It's really simple to use; With easy to understand on-screen menus which are operated from the remote control.



A Freeview Digital Set Top Box gives you access over 10 free to air digital channels, without a subscription or contract. For more information on Freeview please visit www.freeviewnz.tv



A digital box lets you access the free digital channels that are broadcast in New Zealand. It uses a digital signal, received through your normal UHF aerial and lets you watch it through your existing television.



This product is capable of receiving and decoding Dolby Digital Plus.

Manufactured under license from Dolby Laboratories. Dolby and the double-D symbol are trademarks of Dolby Laboratories.



This product has an HDMI connector so that you can watch high definition TV via an HDMI lead when connected to an HD Ready TV.

HDMI, the HDMI logo and High-Definition Multimedia Interface are trademarks or registered trademarks of HDMI Licensing LLC.

Warranty & Product Registration

Please register your product to assist with warranty and product updates. To do this please visit www.dishtv.co.nz and click on **Warranty & Registration**

What's in the box?

Your new set top box



STANDBY BUTTON
Power On / Standby

AV Cable



Remote control



2 x AAA batteries



Rear view

RF IN UHF Aerial input

USB Firmware upgrade +HDD connection

HDMI High definition output

R,L and CVBS AV output (for connection to a non HD TV)

AC 230V Connect to AC 230V~50hz



RF OUT UHF Signal output

ETHERNET

SPDIF Digital audio out (connection to a surround sound system)

Pb,Pr and Y Y,Pb,Pr output (for connection to a non HD TV)

Contents

Contents

	Page
Your Remote Control	5
Connecting up	6
Getting Started	7
Main Menu	8
User Settings	
- Favourite View	9
- Organizer	9
- User Preference	10
Installation	
- Tuning Wizard	
- Auto Scan	11
- Manual Scan	12
- System Setting	13
- Factory Default	14
- S/W uprade via OTA	14
System Configuration	
- Wakeup Timer	15
- Version	15
ESG	16
Media Manager	
- Thumbnail Browser	17
- Recorded Book List	18
- Media Information	18
Connectivity	
- eNet Buttons	19
- eWeather	20
- eMap	21
- eMail	22
Recording	23,24
Recordings Library	25
Bookmarking	26
Editing Recordings	27
Media Center	28
Firmware Upgrade	29
Frequently Asked Questions	30
Freeview HD Channel groups	30
Troubleshooting	31
Check your signal levels	31
Technical Specifications	32
Warranty	33

Your remote control

FAV Switches between your favourite channels.

TEXT Displays digital text pages when available.

STANDBY Power On/Standby.

BACK Goes back to the previous screen or menu.

0 to 9 Selects channels and enters your PIN.

▶|| Pause Play or Pause playback.

MENU Opens the Main Menu screen.

▲▼▶◀ CURSOR Selects option in menu/on screen display.

V▲/▼ Volume up and down.

◀▶▶▶ Fast Forward/Rewind playback.

MUTE Turns the sound on and off.

COLOUR BUTTONS For interactive use and navigating menus.

AUDIO Changes the audio language when available.

GUIDE Opens the Programme Guide window.
i More information.
Holding the INFO button for 3 sec displays the Version page.

■ Stop Stops playback

Exit Exits screens and menus.

OK Confirm selection in menu/on screen displays.

P▲/▼ Channel up and down.

WIDE Cycles between available on screen modes to best fit the picture.

Library Shows your Recordings list.
Holding the Library button for 3 sec displays the record booking list.

Timer Takes you to the wakeup timer.

◀▶ Skip forward or back.

Record Instant Record a channel.

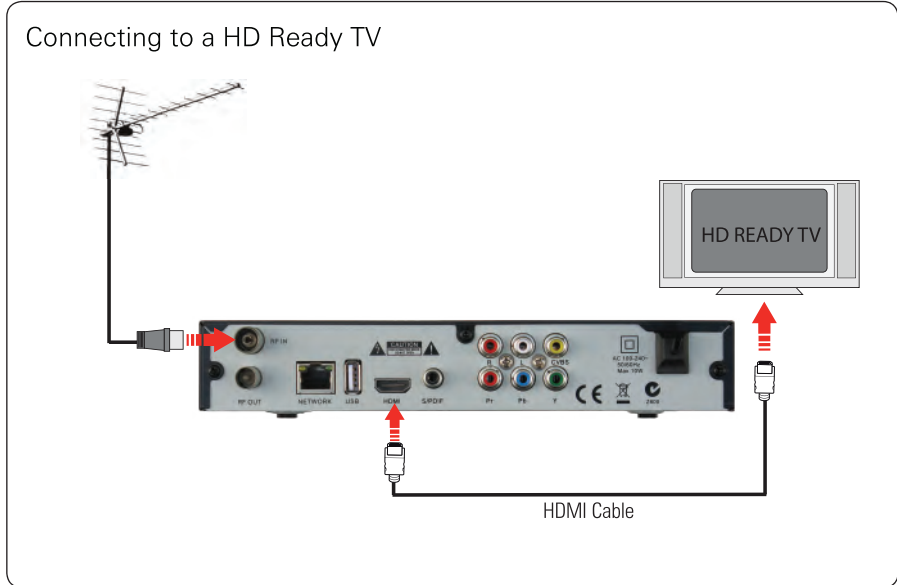
SUB Displays subtitles when available.

AD Enables Audio Descript.

UHF Aerial
Dish TV
 T 1020

Connecting up

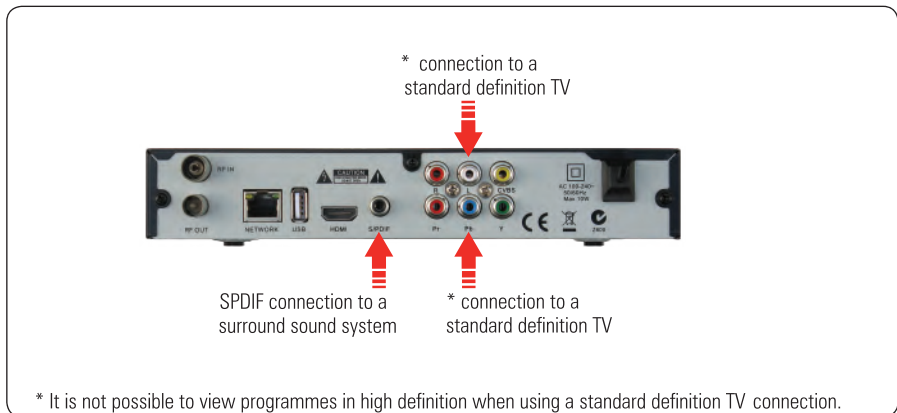
Getting connected



Connect that cable that comes from your Aerial to the RF IN socket in the back of your set top box.

Connect the AV cable that came with your set top box between the yellow red and white sockets on the back panel of your set top box and the AV input on your TV.

Other connections

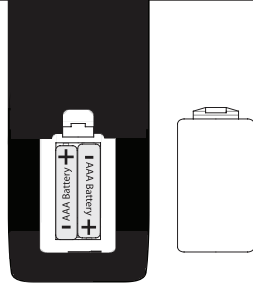


Getting started

1

Put batteries in the remote control

Open the battery cover of the remote control and put two AAA size batteries so the '+' and '-' marks on the batteries match the '+' and '-' marks inside the remote control. Replace the battery cover.

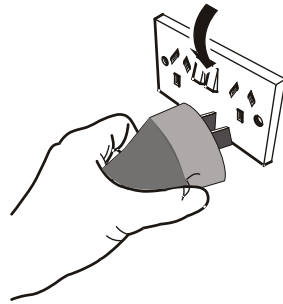


2

Plug in and switch on

Switch your TV on and select the correct video input.

Switch the aerialBox ultra on and wait for it to boot up.



3

The first time install screen

The Welcome screen should appear on your TV*. Press OK to start a scan. An auto scan will now start, please do not push any buttons until it has finished. Once it has finished if the signal from your UHF aerial is good TV1 will appear and you can start using your aerialBox.



* If the Welcome screen does not appear, go to the **Menu** select **Installation** then **Factory Default**. The default pin/password is 0000.

Please make sure you don't have a USB device plugged in while going through the setup process. Once you are setup you can then plug your device in.

Main Menu



Main Menu:

All other Settings and tuning menus are selected from this main menu. This menu is the gateway for all other menus. User can invoke the main menu by pressing the **MENU** key.

This main menu contains several options

User Settings

Installation

System Configuration

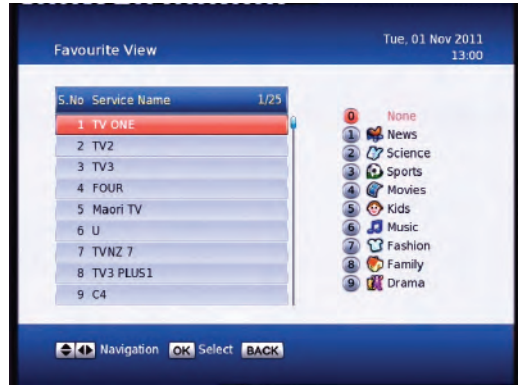
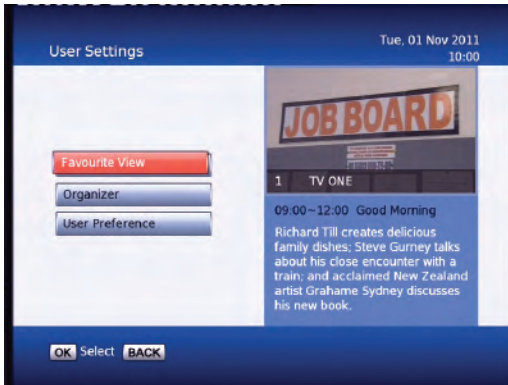
ESG

MEDIA Manager

Connectivity

User can toggle between the options by using **UP/DOWN** or **LEFT/RIGHT** Keys.

Main Menu - User Settings - Favourite View/Organizer



Favourite View:

To enter this menu you will be prompted for your password (Default is 0000)

This menu allows you to view your favourite channel list and allows you to classify channels and group them together to be viewed through favourites later. These groups can then be accessed via the **FAV** button on your remote. Use the number keys on your remote according to the numbers on the right hand side of the screen to add or remove channels from your favourite group.



Organizer:

To enter this menu you will be prompted for your password (Default is 0000)

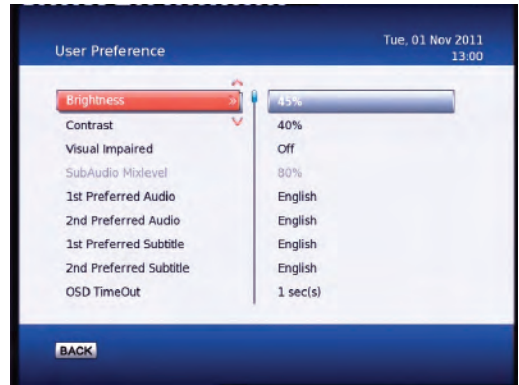
In this menu you will have the options to **Lock**, **Skip** or **Delete** your channels from the list.

Lock: Allows you to lock a selected channel. Once a channel is set to **Lock** you will need to enter your password to view the channel.

Skip: Means when browsing with P+/- the selected channel will be skipped over, but is still able to be accessed by pressing the channel number button.

Delete: Deletes a channel off the list.

Main Menu - User Settings - User Preference



User Preference:

Note: To adjust a preference use the right arrow on your remote not the OK button.

Here you can adjust your brightness and contrast levels.

The **Visual Impaired** option turns descriptive audio on/off. This setting is for the sight impaired.

OSD TimeOut or On-Screen-Display timeout, this option will adjust how long the information banners will stay on the bottom of your screen, these banners appear each time you change channel.

Parental Rating - To enter this option you will be prompted for your password (Default is 0000). Here you can change the password. (Passwords can only be 4 numbers.) You can also set the parental rating using the **Yellow** and **Blue** buttons on your remote.

Recording Start Offset - This option will adjust how many minutes before your program the unit will start recording. This is very handy when programs are not running on time so you don't miss part of your program.

Recording Stop Offset - This option will adjust how many minutes after your program the unit will stop recording. This is very handy when programs are not running on time so you don't miss part of your program.

Auto Time Shift Mode - When this option is on the unit will time-shift continually. Each time you change channel the previous time shift will be deleted and it will start again on that channel. **(You must have a USB drive plugged in to use this mode)**

Time Shift Mode - When this option is on the unit will time-shift only when the Pause button is pushed. **(You must have a USB drive plugged in to use this mode)**

Timeshift Duration - Here you can set the max length the unit will timeshift to.

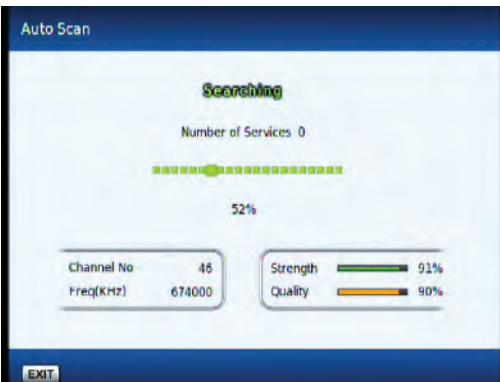
Main Menu - Installation - Tuning Wizard - Auto Scan



Auto Scan:

When the **OK** Button is pressed, the confirmation dialog will be displayed.

Select the Yes option to start the scanning process.

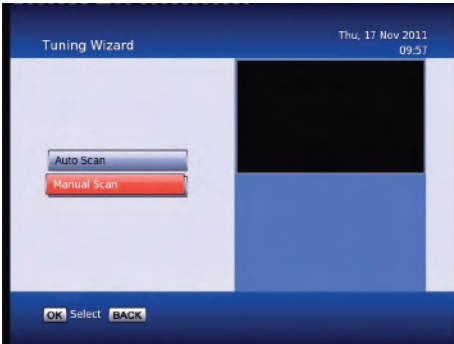


The Scan progress will be displayed along with the Signal Strength and Quality for the current frequency.

If no channels scan in, Try a manual scan to see if you can get good signal levels on the channels available in your area. To see a list of the channels in your area visit www.freeviewnz.tv and type in the search at the top of the page: **freeview hd channel frequencies**.

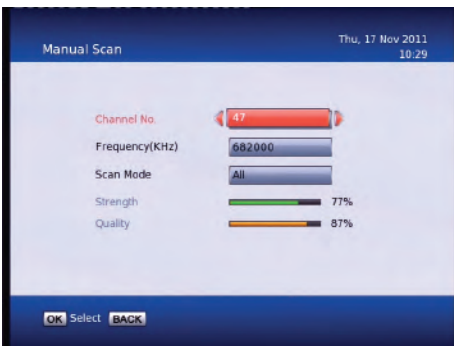
Here you should be able to find a list of channel frequencies used on the Freeview|HD® service.

Main Menu - Installation - Tuning Wizard - Manual Scan



Tuning Wizard:

To enter the Tuning Wizard menu you will be asked to input your password - the default is 0000.



Manual Scan:

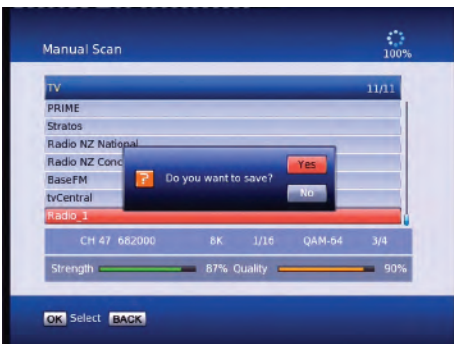
Allows you to select and scan a single UHF channel/frequency. Also displayed is the signal strength and quality levels of the selected UHF channel/frequency. **Scan Mode** give you the options **All, FTA, Scrambled** Once you have good signal strength and quality you can push the OK button to search the selected UHF frequency.

What is good signal strength and quality?

Strength should be between 70-100%

Quality should be 75-100%

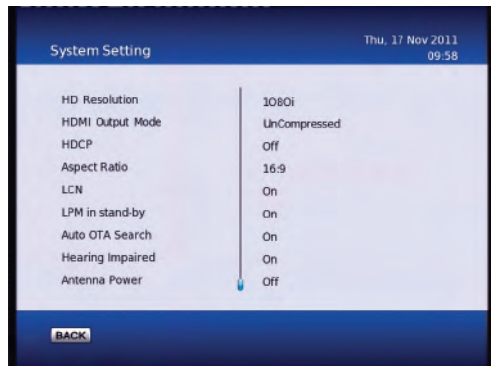
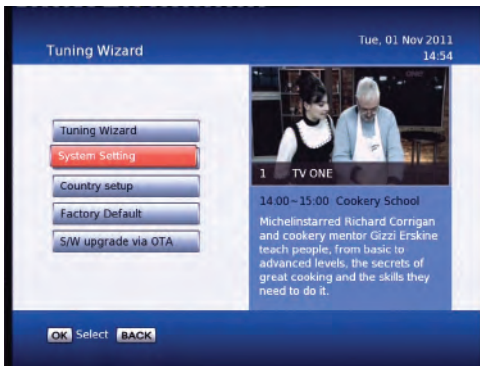
These levels are indicative only. If your levels are good but you are still having reception problems it may be due to RF interference in your area.



The Progress screen will display any channels found.

Once you have scanned channels in you will be prompted to save them or not.

Main Menu - Installation - System Setting



Note: To adjust a setting use the right arrow on your remote. To select a setting use the OK button.

HD Resolution – This is where you set the HDMI output resolution depending on what your TV can handle. Most newer TVs have upscalers and so therefore you can sometimes get a better picture by lowering the output resolution in this menu, It does however depend on the quality and type of upscaler your TV has. If you want the very best picture possible, then you will need to experiment with these resolutions. The **Native** option will mean the unit will output the broadcasted resolutions.

HDMI Output Mode – Here you have the options of Compressed or Uncompressed. This option may be changed to suit your HDMI receiver or surround sound unit depending on what it requires. Default is Uncompressed.

HDCP or High-bandwidth Digital Content Protection. This can be turned on/off

Aspect Ratio – This is to set the output picture shape depending on your TV. If you have a modern LCD or Plasma TV or a wide screen, then you most likely need to set it to 16:9. If you have an older square TV then 4:3 Panscan will most likely suit.

LCN - This stands for Logical Channel Numbering. It is best to be set to On.

LPM in stand-by – This option turns Low Power mode on/off

4 AM Standby S/W upgrade - When this option is set to ON, your unit will start up at 4am each morning and look for a new software upgrade.

Hearing Impaired – This option is to turn subtitles on/off.

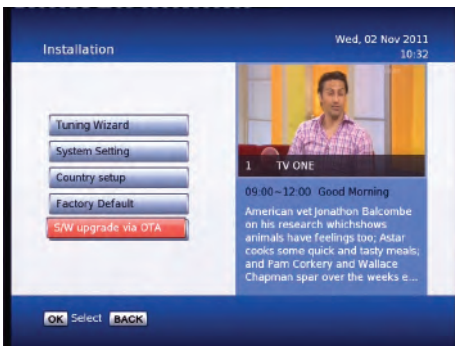
Antenna power - When this option is set to ON your unit will output 5V dc on the aerial socket, this voltage can be used to power an inline amplifier to boost the signal levels.

Main Menu - Installation - Factory Default/ S/W upgrade via OTA



Factory Default

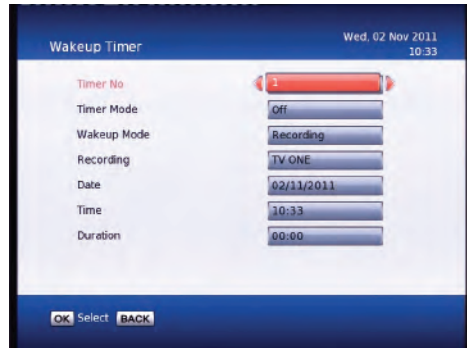
This will reset all settings back to factory, deleting all channels and user settings. Default password is 0000.



S/W Upgrade via OTA

This option can be used only if an Over The Air software update is broadcasted via the UHF transmitter. The software will only be broadcast for a few weeks when there is a major update needed. But if **Auto OTA Search** in the settings menu is set to on, you won't need to use this option.

Main Menu - System Configuration - Wakeup Timer/Version



Wakeup Timer

You can set a service to be recorded at a specific time. Even if the digital receiver is in standby mode, it will start recording at a specified time. When the recording comes to the end the unit will stay in standby until you press the standby button. A maximum of 8 timers can be set at once.

1. Set the **Timer Mode** to **Once**, **Daily** or **Weekly** to make a recording. If this option is set to **Off**, the timer will not operate.
2. Set the **Wakeup Mode** to Recording, Services or Message. If you only want the unit to wake up on a channel at the set time without recording, set this to Services
3. Set the channel you want to record, or set the message you want to appear at the set day and time.
4. Set the **Date** option to a desired date, on which the digital receiver will turn on. Use the left, right buttons on your remote to navigate and change. The date format is Day/Month/Year.
5. Set the start **Time** option to a desired time, at which the recording will be started. Use the left, right and number buttons on your remote to navigate and change. The time format is Hour:Minute.
6. Set the **Duration** option to a desired length of time, in which the recording will be finished. Use the left, right and number buttons on your remote to navigate and change.



Version

This is an information page only. Here you can find your units Software/ Firmware version.

Note: To view the version page instantly from live TV press and hold the *i* button for 3 seconds.

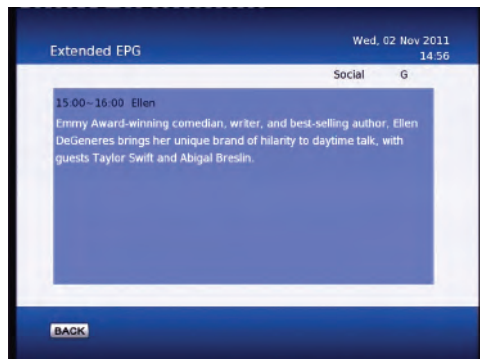


Main Menu - ESG



ESG

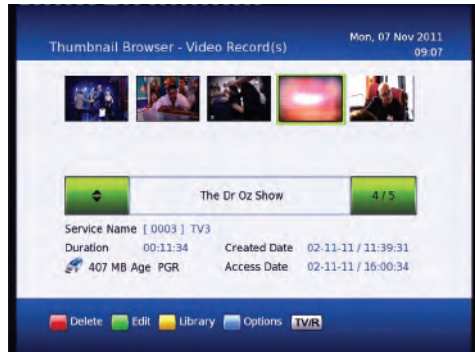
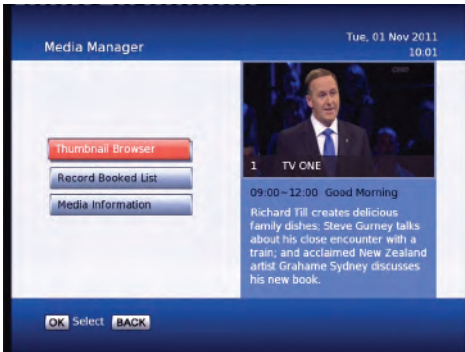
The ESG is an Electronic Service Guide. This is in addition to the freeview EPG (accessed using the **GUIDE** button). Usually you will only use the ESG for non-freeview channels. The ESG will be displayed when selecting the ESG option from the Main Menu. It will list the available services and when focus is set to the current service then its corresponding current and next events are displayed.



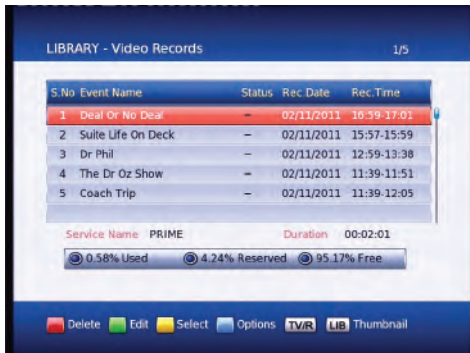
When you are in the ESG schedule dialog and the **Info** button is pressed on the selected event a short description is shown above, pressing the **Info** button again will give an extended description of the selected event that will be displayed.

Main Menu - Media Manager - Thumbnail Browser

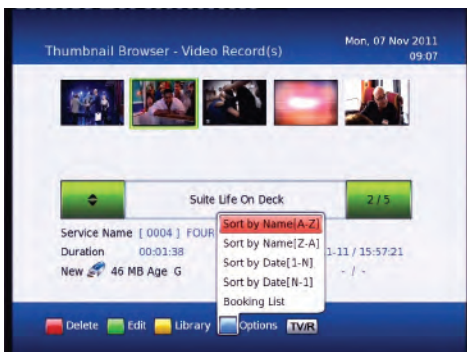
Note: This menu requires that you have a compatible USB drive attached



Here you can browse through your recorded programs as thumbnails, the title and information for your recording is displayed below for the selected thumbnail/recording. The information displayed includes the duration of your recording, the size, the age rating (eg G, PGR, AO), the recordings created date and also the access date. The access date is the date and time the recording was last viewed. If the access date is blank this means the recording has not yet been viewed.



If you push the **Yellow** button when in the thumbnail browser, this will take you to the recording library where you can view your recordings by title. Here you can select and delete multiple recordings.



By pushing the **Blue** button you will see the sort by options. You can also go directly to the recording booklist using the blue button and selecting **Booking List**.

Main Menu - Media Manager - Recorded Book List/Media Information

Note: This menu requires that you have a compatible USB drive attached

Record Booked List
1/5

S.No	Event Name	Type	Status	Booked date	Booked time
1	Everybody Loves Ra	Series	-	07/11/2011	17:00-17:30
2	Dr Phil	Series	-	08/11/2011	13:00-14:00
3	3 News	Single	-	07/11/2011	18:00-19:00
4	The Mentalist	Series	-	07/11/2011	20:30-21:30
5	ONE News Tonight	Single	-	07/11/2011	22:25-22:55

Service Name TV3 Status Movie

0.58% Used
 6.84% Reserved
 92.57% Free

■ Delete
■ Single
■ Library
LIB Thumbnail

To view the **Record Booked List**, Hold down the **LIB** button for 3 seconds while viewing a channel. Or if you are in the library press the **Options** button (**Blue**) and select it in the options list that appears. Here you can view all your programs waiting to record. You can use the **Red** button on your remote to delete a booking. The **Green** button on your remote will change the selected booking between a single record or a series booking. The **Yellow** button will take you to the recordings library. A max of 24 bookings can be made. (this limit may be increased in the future)

Media Information
Mon, 07 Nov 2011
15:42

S.No	Interface	Disc	Drive	File System	Drive Type
1	SATA	Disc	G:	Proprietary	Recorder

Video Titles	5	Total Space	211Hours
Audio Titles	0	Used Space	0.58%
Photo Titles	0	Free Space	92.57%
Reserved space	6.84%		

■ Media Format
BACK

Media Information

This window provides your storage device information. In this window you can press the **Red** button to format your storage device. **Formatting will remove all your recordings.**

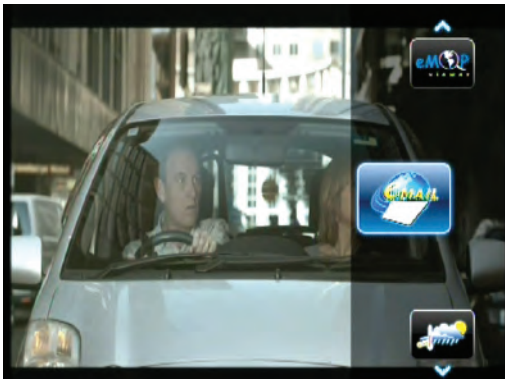
Main Menu - Connectivity - eNet Buttons

All of the eNet features require an internet connection via the LAN port on the rear panel of the aerialBox. The weather and map services are provided by secondary providers and are not under the control of DishTV. DishTV cannot guarantee the ongoing availability of these free services.



eWeather - Allows you to view the weather conditions for the day. It shows Humidity, Temperature etc.

eMap - Allows you to browse and search maps on the internet.



eMail - Allows you to log in to your email address, to send/receive messages and view attached files.

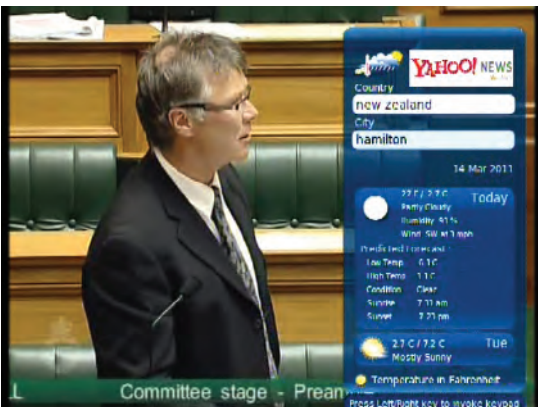
eNet Buttons - eWeather



From the **eNet Buttons** menu you can select **eWeather**. Use Up/Down to navigate between eNet buttons
Use SMS type keyboard to enter letters.
(entry using number keys)



Type in the Country you desire and then the closest city name to you.



Press the **OK** button to load the weather page.

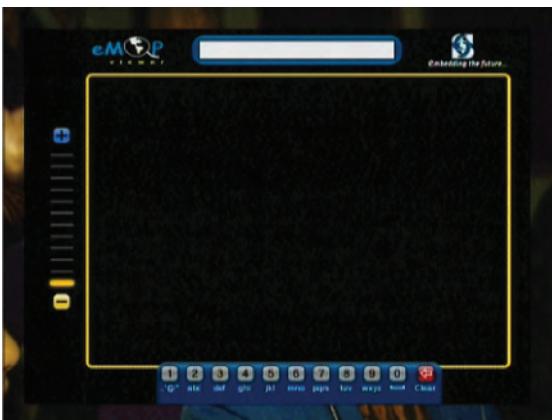
Press **Blue** button to change the view between Celsius, Fahrenheit and Kelvin.

Press the **i** (Info) button to toggle between minimum & maximum mode.

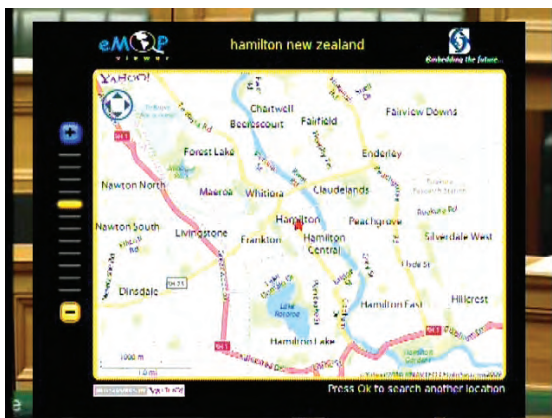
eNet Buttons - eMap



From the **eNet Buttons** menu you can select **eMap**. Use Up/Down to navigate between eNet buttons
Use SMS type keyboard to enter letters. (entry using number keys)

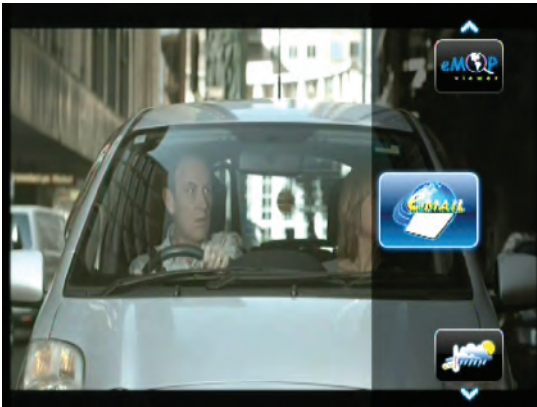


Type in the area you wish to search and press OK for the map to start loading.

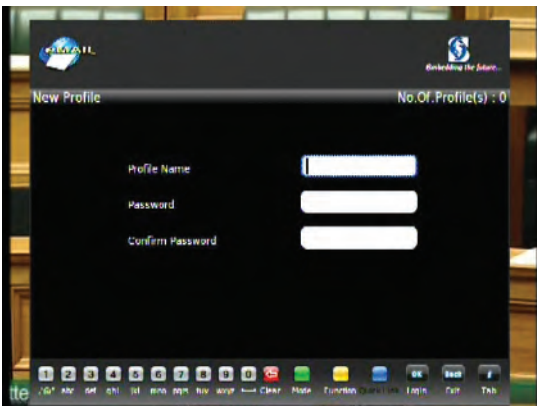


Press the **Blue** button to zoom in on the map, **Yellow** to zoom out. Press the **Left/Right** button to move the map left and Right. Press the **Up/Down** button to move the map up and down.

eNet Buttons - eMail



To check your email on your TV choose the eMail button from the eNet menu.

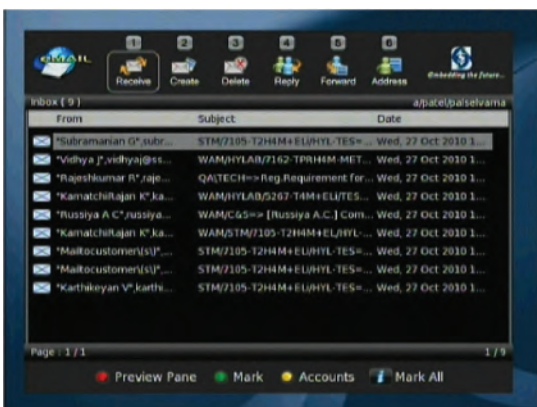


Profile Entry - To keep your email account secure this digital receiver allows multiple secure profiles. The profile has nothing to do with your email login or password. Simply create your own personal profile, which then allows you to keep your email private from other users of this digital receiver.

- Use the **Green** button to change the keypad mode(uppercase, special characters, numbers).

- Use the **i** (Info) button to navigate between the different text boxes (like a tab key).

- The **Back** button will exit the keypad mode to allow you to save your profile.

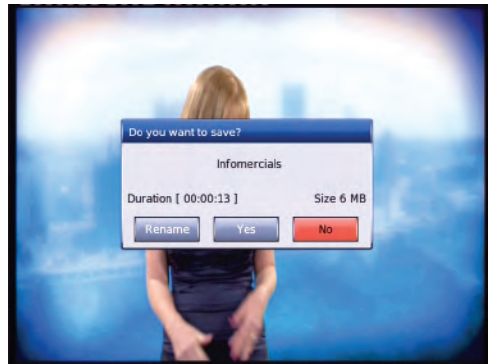
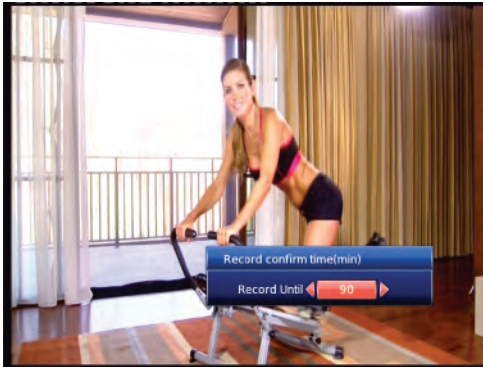


Follow the help bar information for further navigation short cut keys available for quick navigation to create mail, forward mail, reply, address book, etc., Press **Up/Down** button to navigate the different mail headers. If the number of mails is more than 20, mails are split by pages, one page contains 20 messages.

Recording

The Recording functionality requires a FAT32 USB drive to be connected to the receiver.

Please note: This unit has a single tuner so this means there will be some limitations to what channels you can watch while you are recording. Freeview|HD has three channel groups, when recording a channel you can only watch another channel from the same group as the one you are recording. (You need a twin tuner unit to record and watch a channel from another group.) See page 30 for channel groups.



Instant Record:

This is done by pressing the record button on the remote. (This is the grey button with a red circle on it.) Pressing it will start recording on the channel you are currently watching and allow you to select the duration of the recording. The default duration is to the end of the current programme. You can select to the end of the following programme or manually enter a duration by pressing the left/right navigation keys. If you press the stop button you will then have the options of renaming and continuing to record, just saving or discarding it.



Timer Recordings:

This is done through the EPG. Access the EPG by pressing the **GUIDE** button on the remote. It will bring up the guide from which you can then browse to choose a programme to record.

Pressing the **Red** button on a selected show in the EPG menu will mark the program to be recorded. If the program is part of a series you will have the option of recording the whole series (**Yellow** button) or just this episode (**Blue** button).

Recording

Note: This option requires that you have a compatible USB drive attached

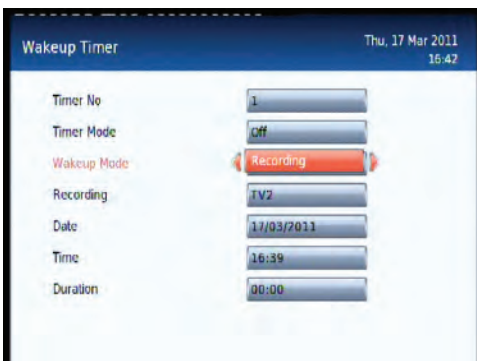


Once you have a recording set you will see a small **R** or **S** to the righthand side of your program. The **R** indicates the program will only be recorded once, the **S** indicates the program will be recorded every time it appears on TV.



If you want to cancel a recording, all you have to do is go back into the EPG menu, go to the programme you selected for recording and press the **Red** button this will ask you whether you want to cancel the recording or not.

Note: You cannot cancel a recording from the EPG if the recording has already started, to stop this recording exit the EPG and press the stop button. You will be asked if you want to save the recording or discard it.

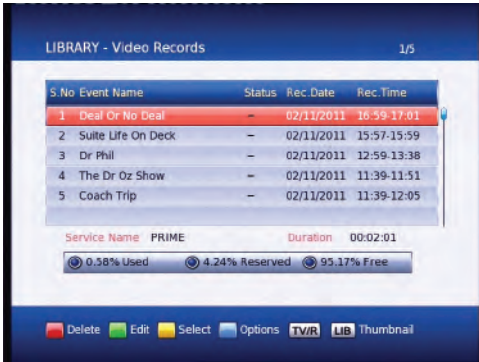


Wakeup Timer - Recording:

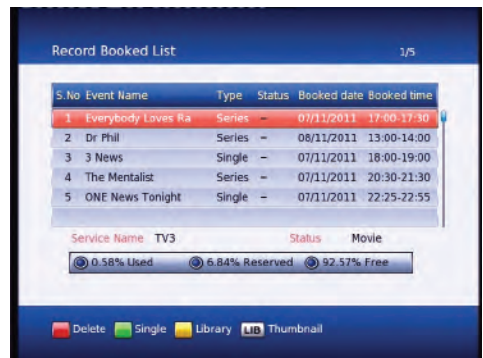
From here you can manually set timer recordings. This is done through Main Menu/System Configuration/Wakeup Timer. By going down to the **Wakeup Mode** and scrolling across to **Recording** the options beneath will change to accommodate the new wakeup mode, giving you choices of Channel, Date, Time and Duration. See page 15 for more info on the wakeup timer.

Recordings Library

Note: This menu requires that you have a compatible USB drive attached



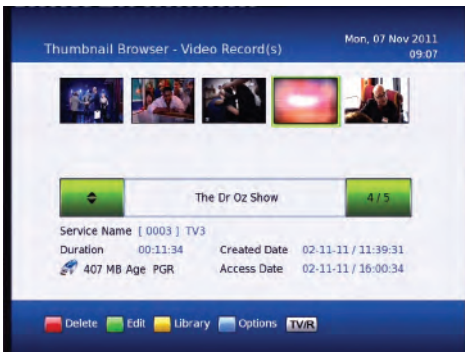
To view recorded programmes, press the Library button. It will be labeled **Library** on the remote. From here you can select the programme you wish to play. To play a recording press the **OK** button, this will then ask you if you want to play from the beginning or from your last viewed position. To delete multiple recordings you need to select the recordings you want to remove using the **Yellow** button, then push the **Red** button to delete.



Record booked list

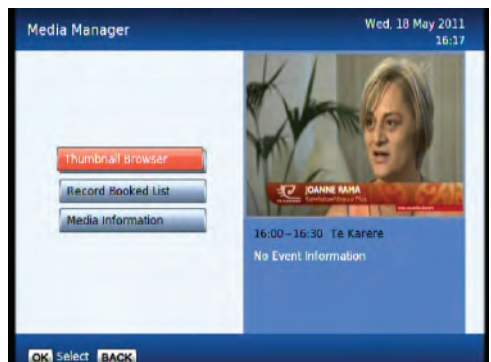
To view booked recordings, press and hold the **Library** button for 3 seconds from live TV, or from the library press the **Options** button (**Blue**) and select it in the options list that appears.

From here you can delete bookings, choose to convert to a series recording or not by following on screen instructions.

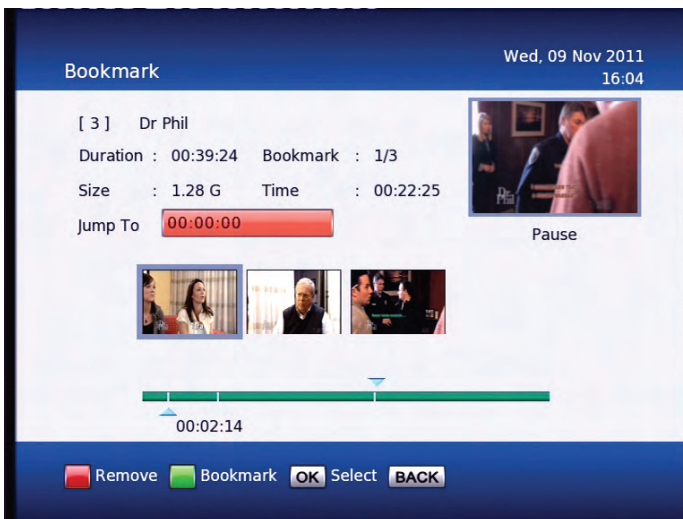


By pressing the Library button (**Library**) a second time while in the library, the Thumbnail browser menu of your video recordings will be opened.

You can also access the Thumbnail Browser in the Main Menu By selecting Media Manager then Thumbnail Browser.



Bookmarking



What is Bookmarking?

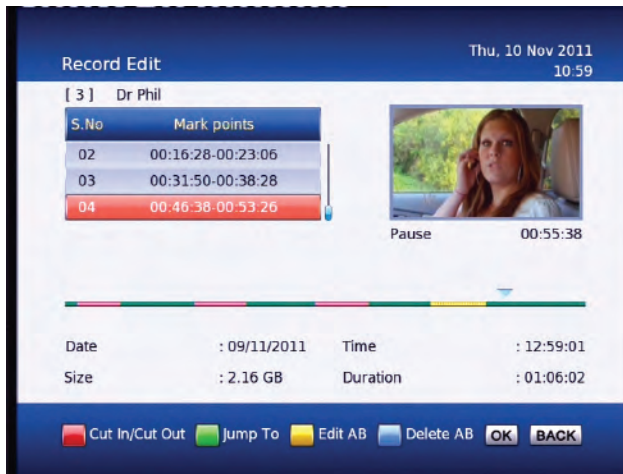
You can mark favourite parts of a recording by creating bookmarks, and then jump to them. You can also use bookmarks to skip ads, just place a bookmark at the end of each ad break and when you next play your recording you can easily skip the ads by pressing the **Right Arrow** button next to the **OK** button. Bookmarks are stored with the recordings so that you can use them again afterwards.

To enter the bookmarking window select your recording from the **Library** or **Thumbnail Browser**, then push the **Green** button on your remote then the **OK** button.

Editing Recordings

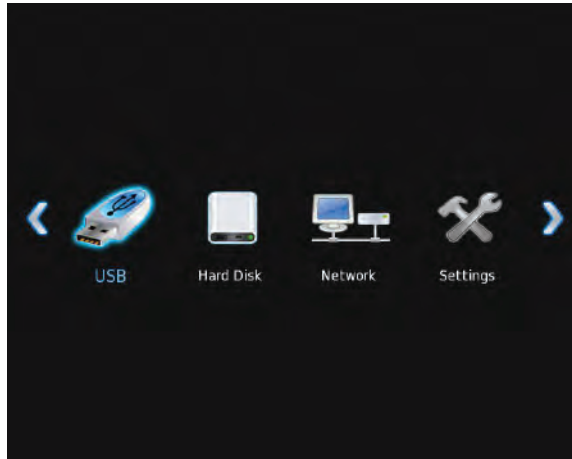


To enter the **Record Edit** window select your recording from the **Library** or **Thumbnail Browser**, then push the **Green** button on your remote then the **OK** button.

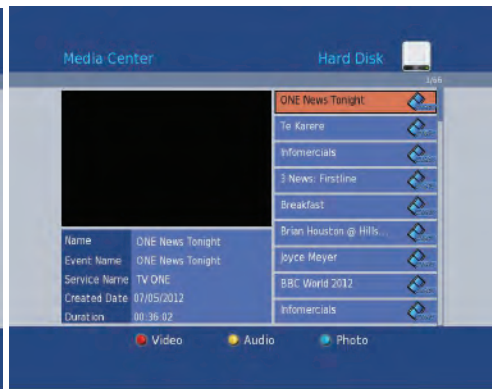


Here you can remove sections of your recordings. In the record edit window your recording will play in the top right of the screen, you can use all your normal play, fast forward, rewind, pause functions to get to where you want to edit. To select an area to delete push the **Red** button to start the selection, and then the **Red** button again to end. If the selection you have made is not quite in the right place you can press the **Yellow** button to edit/move the start of your selection(A) or the end (B). The **Blue** button on your remote will remove the selected section but will not delete that part of your recording. To move between the selections use the **Up/Down** arrows on your remote. Once you are happy with the selections you have made and want to delete these parts from your recording, press the **OK** button and select yes.

Main Menu - Connectivity - Media Center



In the Media Center you can browse your *USB drive*, *Hard Drive* and *Network* connections for files. Under settings you will find the IP settings for your unit. This can be set to *AUTO* or *MANUAL*, The manual setting allows you to set your *IP address*, *Gateway*, *Subnet Mask*, *Primary DNS* and *Secondary DNS*. Displayed also is the *MAC* address for your unit.



Once you select the device you want to browse you can change the list between Video, Audio and Photo files. Some media files may not play, please phone DishTV help line for information on playing media files.

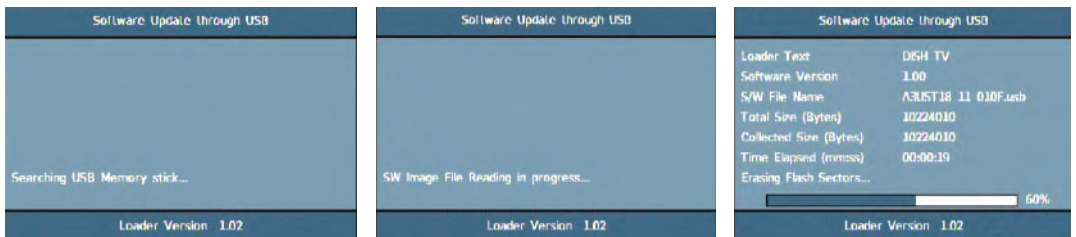
Firmware Upgrade

Via USB:

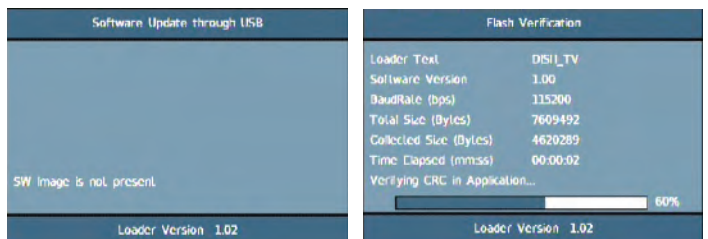
One way to perform a firmware upgrade of your receiver is via USB using the USB port in the back. To do this just follow the instructions below...

1. Download firmware from www.dishTV.co.nz and extract (unzip) onto a USB flashdrive in a folder called **DISHTV_7162**
2. Turn your aerialBox onto standby with the button on the front, insert the flashdrive.
3. Push the power button, then **Immediately** start Pulsing the **"Menu"** button on your remote (not holding it down) Keep pulsing until the front display reads USB, then you can stop and let the unit load the firmware.

The receiver will first display "Load" and if done correctly the display on the front will show "USB" after about 3 seconds. On screen at the same time it will present a window headed "Software Update through USB"
 If the upgrade has been loaded correctly onto the USB flashdrive it will come up with "SW Image File Reading in progress..." straight after it displays "Searching USB Memory stick..."
 Then to a couple of loading screens which will take about 3 minutes to complete.



If the firmware upgrade was incorrectly placed on the USB it will also come up with the "Searching USB Memory Stick..." message, the difference is the next message will say "SW Image is not present" it will then quickly display the Flash Verification screen which will last only a few seconds. If this happens double check to see if the firmware files are correctly in a folder called **DISHTV_7162** on your USB drive.



S/W Upgrade OTA:

This is Software Upgrade over the air. This will only work if the upgrade is being broadcast. It can be selected from the "Installation" option in the Main Menu.

Frequently Asked Questions

T1020 Terrestrial Receiver – Use with UHF Antenna only

Troubleshooting FAQ's

Q. Message on TV says "No Signal"

A. No or Low Signal can be the cause of this problem and it can be due to either or all of:

1. Faulty Aerial Set up
2. Aerial set for wrong polarity
3. Cables too old and damaged
4. Poor joints in cable
5. Split into too many rooms
6. If using rabbit ear or indoor antenna.
7. Not enough signal at the location
8. If the receiver has been taken to a different location then the transmitted frequencies are likely to be different so it needs to be factory reset and channels scanned again .

Q. Pixellation in Live Picture

A. Press Info button twice on remote control, this will give the quality level. Good signals are with Quality Levels >75% and Signal>70%. If they below 70% then check set up for above 1 ~ 6 faults

Q. Cannot watch Prime TV when recording TV1 or TV3

A. Freeview signal is transmitted on 3 x different frequencies, with single tuner receivers you can only tune to and record 1 x frequency at a time and hence channels on the other frequencies are not available until recording is finished .

Q. Not detecting or recording external HDD

A. Format the HDD in Fat32 using Fat32formatter OR load the latest firmware from our website www.dishtv.co.nz which will enable the receiver to format hard drive to Fat32.

Q. Pixellation on playback when recording on flashdrive

A. Many flash drives read/write speed is too slow, especially on HD channels, for best results use a Fat32 formatted HDD with external power source.

Before returning back:

1. Do a factory reset by clicking MENU>INSTALLATION>FACTORY DEFAULT>Pin 0000
2. Check Software version by Clicking MENU>CONFIGURATION>VERSION>SOFTWARE VERSION and check on www.dishtv.co.nz if not latest pls follow instructions on website to update with latest version.
3. If problem persists pls call Dish TV on 0800 DISH TV (0800 3474 88) OR email on support@dishtv.co.nz
4. Do not swap with new unit unless confirmed by Dish TV.

Freeview|HD Channel Groups

Frequency 1	TV One, TV2, U, TV One Plus 1
Frequency 2	TV3, Four, TV3 plus1, C4
Frequency 3	Prime, Maori, Choice TV, Trackside, Parliment, CTV8 and the other regional channels

Note: These groups are subject to change at freeviews discretion

Troubleshooting

Problem	Possible Causes	Solution
No picture	<p>T1020 is not plugged in or turned on at the wall.</p> <p>Your display isn't able to display the current Output Format.</p>	<p>Check the front panel. If nothing is illuminated then it is a power issue - please check power socket and plug socket.</p> <p>Please make sure that Main Menu - Installation - System Setting - HD Resolution is set to one that your TV will be able to display. You can view this using the composite output</p>
Remote control is not working	<p>No batteries or batteries incorrectly inserted.</p> <p>Batteries are flat.</p> <p>The Infrared receiver on T1020 is obstructed.</p>	<p>Insert the supplied 2x AAA batteries as shown on page 7.</p> <p>Insert fresh batteries as shown on page 6.</p> <p>Check that there is a clear "line of sight" from the remote to the sensor on the front panel.</p>
Picture is distorted - too wide or narrow	<p>Wrong TV shape is set.</p>	<p>Go to Main Menu/Installation/System Setting/Aspect Ratio, make sure it is set to match the shape of your display.</p>
No Channels loaded. Database is Empty	<p>No Signal In.</p> <p>Your UHF signal levels are too low for the aerialBox to operate.</p>	<p>UHF aerial Cable not plugged into RF in.</p> <p>Have your signal levels checked then try Main Menu/Installation/Factory Default and scan again.</p>



How to check your signal and quality levels

Push the **Info** button your remote twice to display the screen to the left. Down the bottom right you will see your signal and quality levels. A normal signal strength is around 70-100% and a normal signal quality level is 80-100%. If your levels are lower than 70% and you are having problems you will need to get your aerial and cable checked by a technician.

Technical Specification

General Information:	
Model Number	T1020
Features:	
<p>Designed to receive Freeview HD high definition broadcasts via a UHF antenna.</p> <p>8 Day EPG</p> <p>Less than 1 Watt Standby Power Consumption</p> <p>HDMI Output: 576p, 720p, 1080i, 1080p</p> <p>Upgrade over the air and by USB.</p> <p>HDMI Socket</p> <p>YUV via RCA sockets</p> <p>Composite via RCA sockets</p> <p>Ethernet port (For internet connection)</p>	
System Resource:	
Flash Memory	16 Mbytes
DDR SDRAM	256 Mbytes
EEPROM	8 Kbytes
Power Information:	
Input Voltage	AC 100~250V mains supply
Power Consumption	Max 10w Under 1 Watt in standby mode

Warranty

Please keep your receipt as proof of purchase. This product is warranted for any defect in materials or workmanship for one year after the original date of purchase. This product is for normal domestic use only. this warranty does not cover damage from misuse or neglect, accidental damage, vermin infestation, excessive voltages such as lightning or power surges or any alteration that affects the performance or reliability of the product.

In the unlikely event that your product fails to work normally please contact your supplier and have your receipt of purchase on hand.

This warranty is subject to the following provisions:

- This is only valid within New Zealand.
- The product must be correctly connected and operated in accordance with the instructions contained in the manual.
- This product must be used solely for domestic purposes.
- The warranty does not cover accidental damage.
- The warranty will be rendered invalid if the product is resold or has been damaged by unauthorised repair.
- The manufacturer disclaims any liability for incidental or consequential damages.



Warranty & Product Registration

Please register your product to assist with warranty and product updates. To do this please visit www.dishtv.co.nz and click on **Warranty & Registration**